

Go to www.asbtia.com.au for more information on SBT and an awesome video about jobs in the tuna industry!

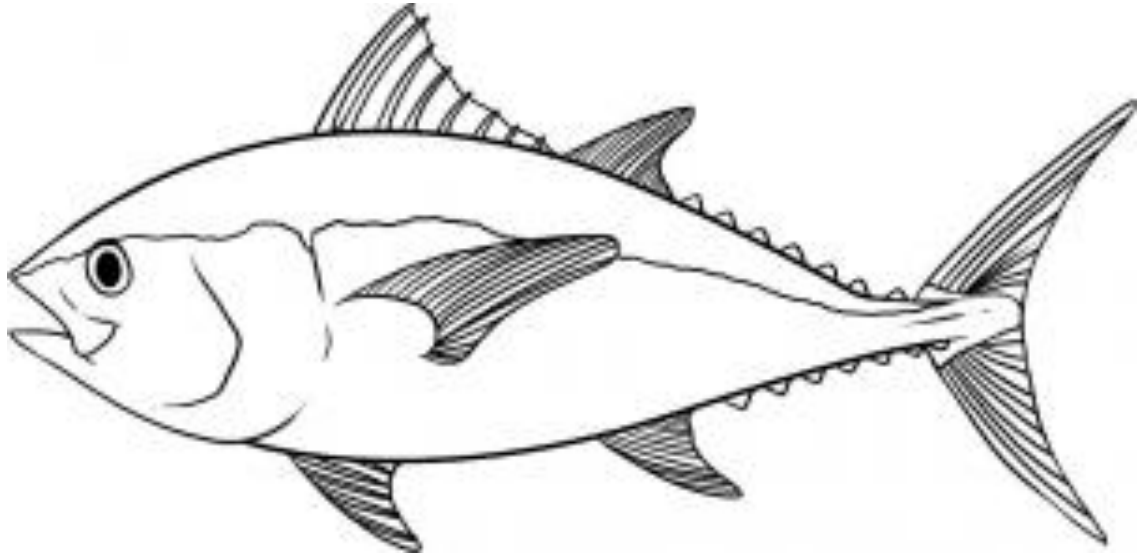
Southern Bluefin Tuna Dissection Exercise

Date:

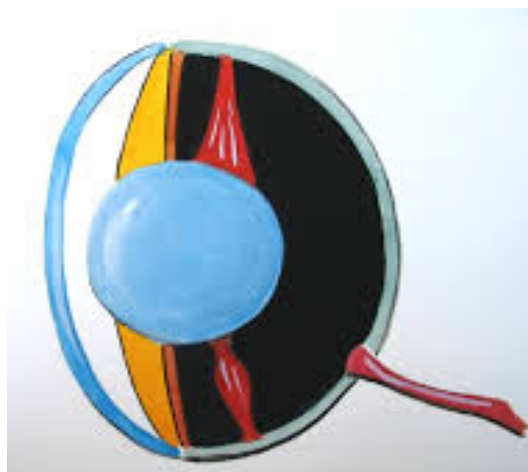
Student:

Scientific Name: *Thunnus maccoyii*

Family: Scombridae



1. Observe the outside of the fish, look for scales, parasites, scarring, note any abnormalities.
2. Describe the morphology (shape), skin and fins of the fish. caudal keel, lateral line
3. Label the different fins on a tuna on the diagram above.
4. List some words that describe the way this fish moves in the water.
5. What is the name of the gill covering and how many gills are there? Why are gills red? What are gill rakers and what is their function?
6. Examine the tuna's mouth, does it have teeth? If so describe them.
7. Label the different parts of the eye:



Go to www.asbtia.com.au for more information on SBT and an awesome video about jobs in the tuna industry!

Southern Bluefin Tuna Dissection Exercise

8. Name 3 functions that may occur at the vent.

9. Briefly explain the functions of each of the SBT internal organs:
 - a. Liver

 - b. Gall bladder

 - c. Pyloric caeca

 - d. Spleen

 - e. Kidney

 - f. Heart

10. Name a function of the skeletal system. Answer

11. What are the functions of different parts of a fish's brain:
 - a. Forebrain

 - b. Midbrain

 - c. Hindbrain

12. Do fish have ears?

13. What is special about a SBT's body temperature?